



Central Sterile Services Department
CSSD



eryigit[®]

technologies for life

Your Sterilization Solution Partner

“If hospitals were to be compared to the
human body;
The operating rooms would be the **Heart** of
the body while the
Central Sterile Services Department would
be the
Coronary Arteries
that feed the heart.”

Our Mission

To provide our services in compliance with the international standards and with respect to human beings and environment, with minimum waste and in accordance with GMP principles,

Our vision

Our primary goal is to increase the efficiency in healthcare services by providing high quality solutions and meet customer expectations.

“We produce in Turkey and Export to The World...”

Our company, ERYİĞİT Medical Devices, has been serving the healthcare sector as Turkey’s leading medical device manufacturer since 1991. We hold ISO 9001 and ISO 13485 Quality Management System Certificates.

Our company holds the certificates of Medical Devices Directive CE1984 and Pressure Equipment Directive CE0045. Our studies regarding the compliance of our Steam Quality Sterilization Devices with the international standards have crowned our products with the TYPE Test certificate provided by the German accredited firm HYGCEN. HYGCEN firm has successfully carried out and is still conducting the validation tests to our steam sterilizers according to TS EN 176651

As one of the leading companies in Turkey, ERYİĞİT Medical Devices continues its production activities in its 10.000 m² factory built with its own capital in Ankara-Ostim-Ivedik.

Environment and Quality

Eryigit carries out all of her production and research activities in accordance with laws, regulations and quality systems as well as principles of continuous improvement, effective production and health and safety of employees and environment and has also been certified by establishing the ISO 14001 Environmental Management System.

Halit ERYİĞİT

Chairman of the Board





CENTRAL STERILE SERVICES DEPARTMENT

Central Sterile Services Departments (CSSD) are the units where the diagnostic and therapeutic equipment, consumables and devices are sterilized for re-use or go through other procedures in the hospital. Architecturally, the unit consists of 3 main areas.





Our Project Vision

In both new hospital projects and plans involving the renewal of existing CSSD's, our expert project team conducts orientation and field feasibility assessment in accordance with the international standards, and the project preparation and presentation are prepared taking into account the customer's expectations. We always aim to work in a solution-oriented manner. Accordingly, we design the projects of CSSD's in a 3D format via professional softwares.





1 DIRTY AREA

- Acceptance and registration of materials and equipment
- Pre-washing, control and separation process
- Disinfection process



WASHER DISINFECTORS

Washer Disinfectors are designed for the disinfection process of contaminated products such as surgical instruments, MIS instruments, anesthesia instruments, ophthalmology instruments, dental surgical instruments, containers, rubber slippers, bottles, laboratory glassware used in hospitals, clinics, and laboratories.

The device is equipped with an effective, powerful hot air-drying system to dry all tools and materials perfectly through the proper distribution of air at all shelf levels. Eryigit Washer Disinfectors are produced with frontal loading hinged door and/or automatic sliding door/s.



GY 150

GY 225

GY 290-GY 360

GY 3000
Trolley Washing Device



MODELS

GY 150



Undercounter Washer Disinfectors

Chamber volume 150 L, 8 DIN 1/1 net basket capacity

Chamber Dimensions (Wx HxD): 540x510x550 mm

Device Dimensions (Wx HxD): 900x840x630 mm

Manuel hinged stainless steel door

Stainless steel detergent storage cabinet

LCD display control panel

4 + 10 washing and thermo disinfection programs

HEPA H14 Filter

Internal Printer (Optional)

RS 232 port + USB port

Electric: 3 x 220/380 V AC, E + Z, 50 Hz, 7.5 kW, 10 A

GY 225



Chamber volume 225 L, 8 DIN 1/1 net basket capacity

Chamber Dimensions (Wx HxD): 560x600x620 mm

Device Dimensions (Wx HxD): 675x1850x700 mm

Manuel hinged glass door/s

Stainless steel detergent storage cabinet

LCD display control panel

4 + 10 washing and thermo disinfection programs

HEPA H14 Filter

Internal Printer

RS 232 port + USB port

Electric: 3 x 220/380 V AC, E + Z, 50 Hz, 10 kW, 12 A

GY290 - GY360



GY 290

Chamber volume 290 L, 10 DIN 1/1 net basket capacity

Chamber Dimensions (Wx HxD): 620x670x670 mm

Device Dimensions (Wx HxD): 1080x1980x820 mm

Automatic or manuel door/s

Electric: 3 x 220/380 V AC, E + Z, 50 Hz, 10 kW, 12 A

GY 360

Chamber volume 360 L, 15 DIN 1/1 net basket capacity

Chamber Dimensions (Wx HxD): 660x720x770 mm

Device Dimensions (Wx HxD): 1050x1920x965 mm

Automatic sliding door/s

Electric: 3 x 220/380 V AC, E + Z, 50 Hz, 12 kW, 20 A



Door System

- Single or double door
- Manual and automatic configurations
- Impact and heat resistant glass for full view.

Chamber

- Hot air blowing system is integrated on the same circuit with water spray system.
- 2 washing spray arms at the top and bottom of the chamber for efficient water and air distribution.
- Washing arms are installed for each washing rack (loading equipment).
- Washing arms can be easily removed for cleaning and maintenance.
- Chamber is produced with oval edge design, and with this feature, it ensures easy cleaning and a good circulation cycle of the water in the chamber.
- Water filtering system to prevent the circulation of the residues in the chamber.
- Chamber, washing arms and tank filters are made of AISI 316L stainless steel.
- Chamber LED Lighting

Washing

- The circulation pump provides high water flow rate with efficient water pressure.
- The device increases the DI water temperature used for thermal disinfection process upto 93 °C according to the standards and performs the thermal-disinfection process.
- HEPA H14 filter
- Storage cabinet at the bottom of the device upto four 5 L (1.32 Gal US) chemical containers.

Control Unit



- RS 232 port for printer connection to monitor/validate the cycles
- Integrated printer
- LCD color display to monitor the cycle status
- USB port and ethernet connection



Programs

- 4 standard and additional customizable programs upon request
- Each program consists of maximum 5 stages;
 - Pre-washing
 - Washing
 - Rinsing
 - Disinfection
 - Drying
- The outer panel and frames are made of AISI 304 stainless steel.



■ Loading Equipment

Suitable loading equipment options are offered for our washer disinfectors and drying devices, such as loading trolleys, loading racks of different levels, baskets with tools and equipment, and a wide range of additional devices designed for customers needs.

Washing procedures can be performed for surgical instruments, minimally invasive surgery instruments, anesthesia instruments, ophthalmology instruments, rubber slippers, containers, baby bottles, etc.



Auxiliary Equipment

■ Ultrasonic cleaner



■ Air and water gun



■ Trolley



■ Dirty material reception desk



■ Sink and prewash counter



■ Detergents



Compliance with International Standards

- Medical Device Directive 93/42 / EEC,
- EN 60601-1, EN 61010-1, EN 6010-10-2-040
- Machinery Safety Directive 2006/42/ EC,
- EN 60601-1-2, EN 61326-1, EN ISO 15883-1-2



2 CLEAN AREA

- Tool maintenance and repair
- Packaging process
- Sterilization process are performed, respectively.

After the disinfection process, the tools and equipment are classified according to their type, and examined, and sent for maintenance if needed

Following all these processes, tools and equipment are transferred to the packaging area. The control and folding process of textile materials are performed on linen folding tables. All the equipment we produce are manufactured in accordance with the architectural project to be used and are of stainless steel with AISI304 quality.



STERILIZERS

- Steam Sterilizers (Autoclaves)
- Low-Temperature Hydrogen Peroxide Gas Plasma Sterilizers





■ Standard Specifications



• Jacket and Chamber

- Jacket is made of 3 mm and the sterilization chamber is made of 6 mm thickness of AISI 316L or AISI 316Ti quality stainless steel.

• Door

- Doors are made of AISI 304 or AISI 316L quality stainless steel. Sliding door or flywheel cover options are available in double and single door models. Steam Sterilizers are equipped with a Safety Lock to prevent the operator from starting the program before the door is completely closed. The door is mechanically locked throughout the entire cycle and does not open until the cycle is completed and until the pressure and temperature in the chamber return to normal.

• Outer Body and Frames

- The outer body and frames are made of AISI 304 quality stainless steel (AISI 316L optional). Special panel designs can be made according to customer needs. All system parts are placed on this frame and are easily accessible from both sides during maintenance.

Steam Generator (Hot and Clean Steam)

- Steam Sterilizers are heated with saturated steam. Steam is supplied from the electric steam generator located in the sterilizer. The standard configuration of our device is suitable for connecting to the central steam system. Steam support provided to the device is automatically controlled. The steam generator improves the quality of the steam, preventing problems caused by low quality steam supplied from the central steam system.
- To produce clean steam in the generator, it is necessary to use a high-quality water treatment system. The better the quality of the water, the higher the quality of the steam.
- Our Steam Sterilizers are equipped with electronic pressure transducers to precisely protect the required pressure values.

Piping System

- Connections and pipes used in the device are made of AISI 304 or AISI 316L quality stainless steel. The system is operated with both electric and pneumatic valves.





Steam Sterilizers

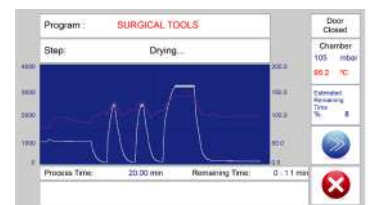
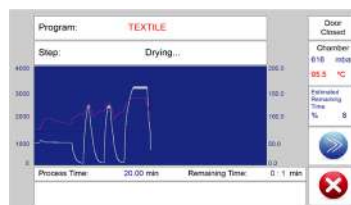
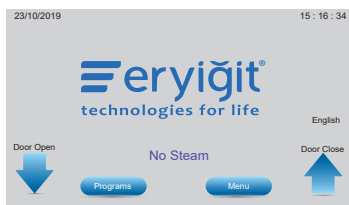
Control Unit



- The control system consists of an industrial PLC a 7" color touch screen panel with Input / Output modules and a printer.
- The system controls the sterilization process and records the data for each cycle.

PROGRAM

- 3 standard cycle programs:
 1. Textile Material Sterilization Program
 2. Surgical Instrument (Solid) Material Sterilization Program
 3. Rubber Material Sterilization Program
- 2 test cycles:
 1. Bowie-Dick test
 2. Leak test
- Interface Traceability feature
- Thermal printer (Printer)
- Ethernet and USB connection modules



Device Configuration

- Single or Double Door Block type Steam Sterilizers
- Vertical sliding door
- Rectangular chamber type
- Autoclave outer body panels are made of AISI 304 stainless steel.
- Autoclave chassis frame is made of steel (optional AISI 304 stainless steel)
- Chamber made of AISI 316L quality stainless steel
- Jacket made of AISI 304 or AISI 316L quality stainless steel
- Door made of AISI 304 or AISI 316L quality stainless steel.
- Manual loading of baskets on the chamber rails
- Sealing of the device is ensured by heat resistant Silicone door seals
- Piston type pneumatic valves with mechanical seals
- Electric power supply (380 V, 50 Hz)
- Double stage type vacuum pump
- Feeding from 2 different lines for steam generator and vacuum pump
- PLC control system which is an independent recording system
- Control system of the device controls all sterilization processes and all stages of these processes.
- When the sterilization process is finished, it warns the user with the text on the screen and the audible signals on the device.
- 7" touch screen on the Control Unit



TECHNICAL SPECIFICATIONS OF STEAM STERILIZERS

Our steam sterilizers have been designed and manufactured for the sterilization of surgical instruments, textiles, rubber and plastic products, and heat resistant medical devices used in Hospitals and Clinics in accordance with the international standards.

CHAMBER SIZE

MODEL (GOLDBERG®)	120 S	160 S	250 S	300 S	422 S	550 S	675 S	840 S	1000 S	2000 S
			250 D	300 D	422 D	550 D	675 D	840 D	1000 D	2000 D
CHAMBER VOLUME(L)	120	160	250	300	422	550	675	840	1000	2000
WIDTH (mm)	350	350	350	670	670	670	670	670	670	800
HEIGHT (mm)	520	700	700	700	700	700	700	700	700	1200
DEPTH (mm)	700	700	1050	700	1000	1300	1600	1950	2250	2100

EXTERNAL DIMENSIONS OF DOUBLE DOOR MODELS

MODEL (GOLDBERG®)	-	-	250 D	300 D	422 D	550 D	675 D	840 D	1000 D	2000 D
WIDTH (mm)	-	-	800	1080	1080	1080	1080	1080	1080	2185
HEIGHT (mm)	-	-	1950	1950	1950	1950	1975	1975	1975	2135
DEPTH (mm)	-	-	1410	1000	1300	1600	1900	2250	2550	2500

EXTERNAL DIMENSIONS OF SINGLE DOOR MODELS

MODEL (GOLDBERG®)	120 S	160 S	250 S	300 S	422 S	550 S	675 S	840 S	1000 S	2000 S
WIDTH (mm)	800	800	800	1080	1080	1080	1080	1080	1080	2185
HEIGHT (mm)	1800	1800	1950	1950	1950	1950	1975	1975	1975	2135
DEPTH (mm)	1100	1100	1500	1200	1500	1800	2100	2450	2750	2400
WEIGHT (kg)	580	680	750	890	1050	1110	1310	1520	1720	2800
PACKING WEIGHT (kg)	650	750	900	1070	1250	1310	1510	1720	1920	3200

OTHER SPECIFICATIONS

MODEL (GOLDBERG®)	120 S	160 S	250 S	300 S	422 S	550 S	675 S	840 S	1000 S	2000 S
CHAMBER VOLUME (L)	120	160	250	300	422	550	675	840	1000	2000
STU CAPACITY	1	2	3	4	6	8	10	12	15	24
TOTAL POWER (KW)	30	30	40	40	50	50	60	70	80	120
GENERATOR POW. (KW) (3 phase / 380 ± 10 V AC)	20	20	30	30	40	40	50	60	70	90
GENERATOR VOLUME (L)	50	50	50	50	60	60	60	70	90	90



Compliance with International Standards

- Medical Device Directive 93/42/EEC,
- Pressure Vessels Directive 2014/68/EU,
- Low Voltage Directive 2014/35/EC,
- Electromagnetic Compatibility Directive 2014/30/EC,
- Machinery Safety Directive 2006/42/EC,
- EN 60601-1-2, EN 60601-1, EN 61010-2-040
- Pressure vessels directive (Steam Sterilization Device standard) produces in full compliance with EN285,
- The device has a “type test certificate” approved by an independent and internationally accredited institution in accordance with the EN285 standard.



HYDROGEN PEROXIDE LOW TEMPERATURE STERILIZER



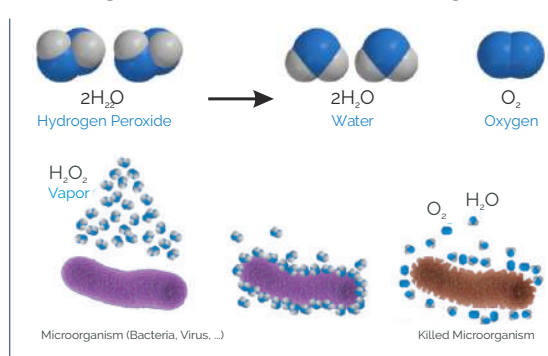
It is designed for sterilization of sensitive instruments and equipment that are resistant to heat and to moisture. It prevents corrosion

caused by moisture and allows longer use of the tools. Hydrogen Peroxide, which contains free radicals, is highly reactive and kills the microorganisms by interacting with their membrane and organic structures.

It does not use or release toxic substances. It is user and environmentally friendly, only water and oxygen are released as waste. It can sterilize at low temperatures (40-55 °C). Instruments and devices with lumens can be sterilized.

Loads can be sterilized in Tyvek packages. There is no need for additional infrastructure other than electrical connection and its installation is easy. It has low purchasing and operating costs.

Hydrogen Peroxide Sterilization Logic



HYDROGEN PEROXIDE PLASMA STERILIZER TECHNICAL SPECIFICATIONS

BOILER DIMENSIONS

MODEL	GP 80	GP 120	GP 135	GP 160	GP 200
CHAMBER VOLUME (L)	80	120	135	160	200
WIDTH (mm)	435	435	435	435	435
HEIGHT (mm)	402	402	402	402	402
DEPTH (mm)	450	700	750	890	1120

EXTERNAL DIMENSIONS

MODEL	GP 80	GP 120	GP 135	GP 160	GP 200
WIDTH (mm)	735	735	735	735	735
HEIGHT (mm)	1885	1885	1885	1885	1885
DEPTH (mm)	1000	1000	1000	1250	1300
WEIGHT (kg)	330	350	380	400	440

ELECTRICAL CONNECTION

MODEL	GP 80	GP 120	GP 135	GP 160	GP 200
DEVICE POWER (kW)	2,8	4,1	4,1	5,5	5,5
CONNECTION	3 phase / 380 ± 10V / 50 ~ 60Hz/ 5x4 mm ² cable				





LOW TEMPERATURE HYDROGEN PEROXIDE STERILIZER

Technical Specifications	
Material	Chamber : Aluminum Outer body panel: AISI 304 Satinless Steel
Door	AISI 304 Stainless Steel
Lumen	Teflon Lumen (Flexible) 0.7 mm x 1.5 m - 1.5 mm x 300 mm Stainless Steel Lumen 1mm x 300 mm - 1.5 mm x 300 mm
Total Cycle Time	Lumen-free: 30 ± 2 Minutes Standard: 51 ± 2 Minutes (1.5 Lumen in diameter) Intensive: 60 ± 2 Minutes (0.7 mm Lumen apat)
Chamber Volume	Total Volume: 80 - 120 - 135 - 160 - 200 Liters
Control Screen	7 "Touch Screen
Control Unit Printer	Thermal Printer
Temperature	40 °C - 55 °C
Solution	59% H ₂ O ₂
Installing Solution	Cartridge (Cassette) System; Lumen-free program / Standard program: 6 Cycles in 1 Cartridge



Sterilization Cycle Programs

Lumen-Free Program

Cycle time is approximately 28 min.
(Load amount <5 kg)

- Reusable medical devices
- Rigid Scopes
- Micro-surgical kits

Standard Program

Cycle time is aprox. 49 minutes

- All lumen-free program tools and devices
- Endoscopes
- Flexible Teflon® lumens (Lumen diameter> 1.5mm)
- Stainless steel lumen

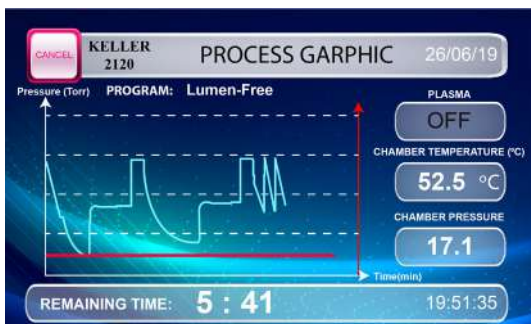
Intensive Program

Cycle time is aprox. 58 minutes

- All standard program tools and devices
- Endoscopes
- Narrow channel and long lumen tools
- (Lumen diameter> 0.7 mm)



Hydrogen Peroxide Sterilizer Control Panel



- It is easy to install and to use the device. You can follow the sterilization process by using the LCD touchscreen. Each stage and duration of sterilization is automatically displayed on the LCD screen.
- The device has a touch screen and all features and programs can be controlled by the user from this screen easily.
- The cycle stages and elapsed time can be followed from the screen on the front panel of the device. There is a system in the device that gives information about all stages of sterilization and sterilization parameters during the cycle.



*If hospitals are compared to a human
body;
Operating theaters are
the heart of this body,
Central Sterile Services Departments
feed this heart like
Coronary Arteries*





3 STERILE AREA

Control, storage and delivery of sterilized instruments and equipment to the relevant department.

- Storage
- Registration and Dispatch operations



Stainless Steel Equipment Used in the Sterile Area

■ Dispatch Table



■ Shelves



■ Sterile Container Trolley



■ Transport Trolley





■ Prewash Acceptance and Sinks



- One, two or three sinks.
- Made of AISI 304 Quality 18/8 CrNi stainless steel.
- Production is done in accordance with the architectural projects.

■ Air and Water Gun



- Stainless steel.
- Designed as a compressed air or pressurized water gun.
- Suitable for cleaning lumen instruments.
- Resistant to 6 bars of pressure.
- Screw system is available on the gun for pressure adjustment.
- Eight interchangeable tips of different sizes.
- PVC connection hose.

■ Ultrasonic Cleaner



- Benchtop cleaners solutions with accessory options such as stainless-steel lids and various washing baskets from 18 liters to 40 liters.
- Can be used for cleaning equipment (lumens, etc.) which are difficult to clean through dissolution and removal of blood, protein and other organic substances at specific temperatures (at 40-50 °C) by ultrasonic waves.

■ Mobile Work Tables



- Can be manufactured as mobile or stationary upon request.
- The work table is optionally produced as single or double floors.
- Made of AISI 304 Quality 18/8 CrNi stainless steel.
- Manufacturing is done in accordance with the architectural projects.

■ Large Equipment and Trolley Washing Pressure Water Pump



- No electricity is required and has proportional dosage technique
- Measuring function thanks to the volumetric hydraulic motor
- Continuous proportional injection of liquid or chemical solution
- Integrated mixing feature
- Servo-controlled adjustment by proportional water flow
- The system consists of 1 Dosatron, 1 Wall console, 1 Suction hose.



■ Lighted Linen Folding Tables



- Textile material (Woven Surface) is checked on the led lighted area located on the table.
- Lamp is controlled with an on-off switch.
- Made of AISI 304 Quality 18/8 CrNi stainless steel.
- Various dimensions according to the architectural plan.

■ Reception and Dispatch Desks



- There are 2-3-4 drawers on the table.
- Produced with or without cabinet
- Made of AISI 304 Quality 18/8 CrNi stainless steel.
- Various dimensions according to the architectural plan.

■ Trolleys



- Designed to carry materials in Sterilization Centers.
- Suitable for the transportation of containers or other materials.
- Made of AISI 304 Quality 18/8 CrNi stainless steel.
- Various dimensions upon request.



■ Material Cabinets



- Two lockable glass doors.
- Cabinet has a shelf system for putting materials.
- Made of AISI 304 Quality 18/8 CrNi stainless steel.
- Various dimensions according to the architectural plan.





Fully Automatic Packaging Device



- Used for the packaging of tools and equipment to be sterilized.
- Produced in different models for both closing process and automatic cutting and closing process.
- Robust, durable body
- Temperature control with microprocessor
- Temperature tolerance $\pm 1\%$
- Automatic feeding with optical sensor
- Adjustable temperature from 50 °C to 250 °C
- LCD Screen
- 10 m/min. closure speed
- Adjustable closing distance
- Automatic sleep mode
- Integrated printer
- Packaging date, expiration date, lot number and operator code can be printed
- Adjustable font width
- The printer unit can be disabled
- Lot / Package count feature
- Packaging date and expiration date are updated automatically

Packaging Station



- Made of AISI 304 Quality 18/8 CrNi stainless steel.
- Produced with multi-functional features for the packaging process.
- Includes a roll cutting apparatus.
- Produced with 2 or 3 drawer options.
- Two roll hanging devices.
- The table is illuminated with led lamp.
- Has five sockets on the table.
- Has 1 or 2 material shelves.
- An optional magnifying glass may be added to the table. Optional monitor connecting leg available.
- Various dimensions upon request.

Packaging Table



- Made of AISI 304 Quality 18/8 CrNi stainless steel.
- Has one roll cutting apparatus.
- Produced with 2 or 3 drawers optionally.
- Two roll hanging devices.
- Has 1-3 different size sterilization baskets on the side or on the table.
- Optionally, led table lighting.
- Optional magnifying glass is supplied.
- Various dimensions upon request.



■ Transport Trolley with Basket



- Single, double, triple folded or multiple decker
- AISI 304 quality 18/8 CrNi stainless steel
- Body made of 3,5 mm ($\pm 10\%$) fence
- 4 round buffers mounted on the wheels of base



■ Shelves



- Three, four or five shelves
- AISI 304 quality 18/8 CrNi stainless steel
- Portable
- Grated shelves
- Adjusted rack intervals
- Various dimensions according to the architectural plan.

■ Wrap Hanger



- AISI 304 quality 18/8 CrNi stainless steel
- Hangers made of weldless stainless steel
- Four wheels, two of are lockable
- Handle is polished

■ IV Pole



- AISI 304 quality 18/8 CrNi stainless steel
- Five free standing with plastic wheels
- Two wheels are lockable
- Four hooked and compatible to carry infusion pump



■ Device Transport Terolleys



- Shelves are specially designed for device placement
- Made of sheet metal
- Antibacterial electrostatic powder paint
- Three folded and with one drawer
- Four antistatic wheels two of them lockable

■ Surgical Dual Vessle



- AISI 304 quality 18/8 CrNi stainless steel
- The port vessel has two rings and two basins attached to these rings.
- 5 antistatic wheels, two of them lockable
- Equipped with a push rod

■ Moon Shape Surgical Tool Table



- AISI 304 quality 18/8 CrNi stainless steel
- Designed for operating and intervention rooms
- Carrying pipes made of weldless stainless steel
- Produced as double shelves configuration
- One side of the table top shelf has a barrier

■ Crash Cart



- AISI 304 quality 18/8 CrNi stainless steel
- In different configurations with 2, 3 or 4 drawers
- A bowl and a bowl apparatus on the side of the car
- One plastic dustbin on the side of the car
- Equipped with a push rod
- 4 antistatic wheels, two of them lockable
-



■ Mayo Table



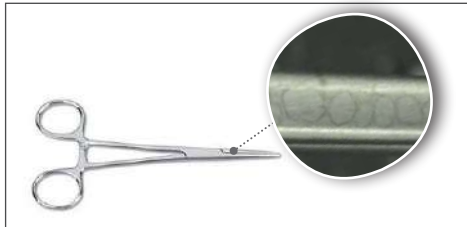
- AISI 304 quality 18/8 CrNi stainless steel
- The upper table is adjustable and has 360 degree rotation feature
- Height can be adjustable by hydraulic means
- 3 antistatic ABS wheels, two of them lockable



4 WATER TREATMENT

The importance of using a water treatment system

The use of purified water is very important to prevent damaging the machinery and equipment in CSSDs. The pictures below show the damage caused by the use of untreated water.



Minerals that should be in the quality of water fed

Within the scope of FDA and EU Medical Device Directive (93/42 / EEC), according to European Standard EN 285: 2015 (Annex-B), the water quality to be used in Steam Sterilization devices should have content within the values specified in the table below.

The water to be used in our devices manufactured by us must comply with the specified criteria. For this purpose, it is highly recommended to use the water purification device together with our devices.

MINERALS THAT MUST BE IN THE NUTRITIONED WATER QUALITY

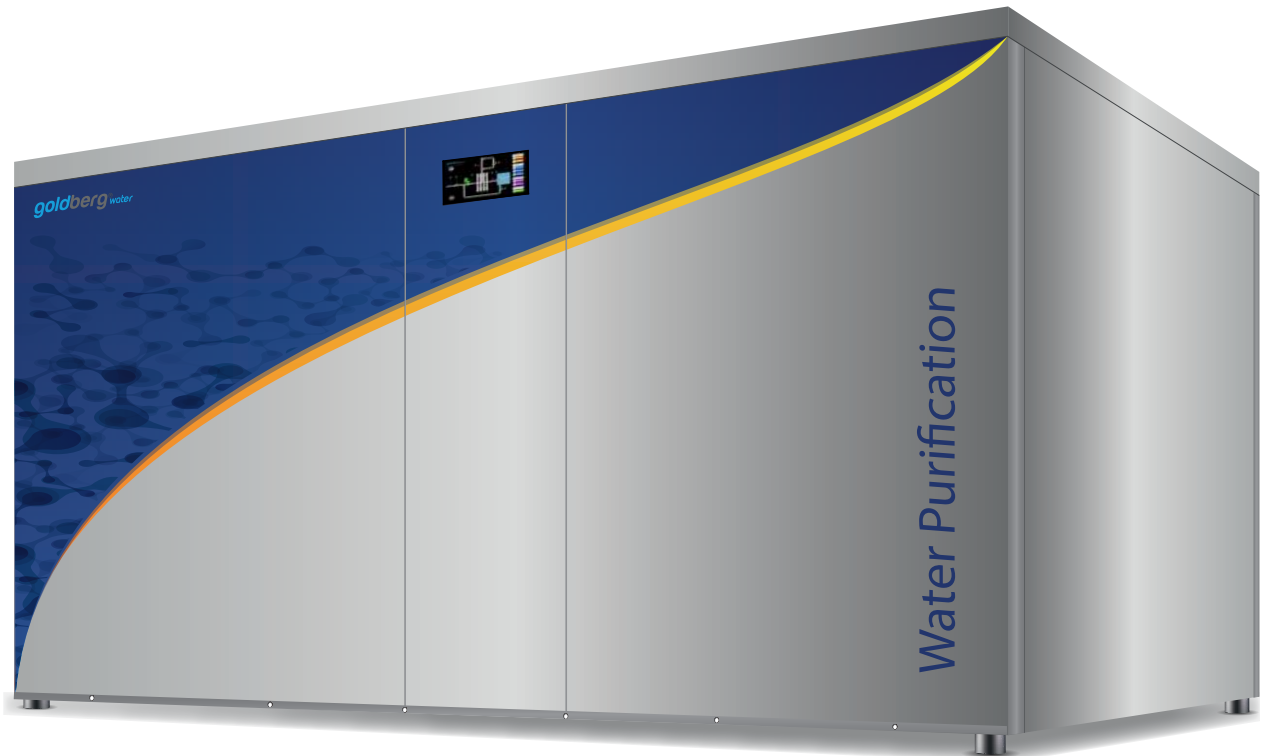
Feed Water Evaporation Residue	≤ 10 mg/L
Silicon Oxide, SiO ₂	≤ 1 mg/L
Iron	≤ 0.2 mg/L
Cadmium	≤ 0.005 mg/L
Lead (Pb)	≤ 0.05 mg/L
Other heavy metals other than Iron, Cadmium, Lead	≤ 0.1 mg/L
Chloride (Cl)	≤ 2 mg/L
Phosphate (P ₂ O ₅)	≤ 0.5 mg/L
Conductivity at 25°C	≤ 5 µs/cm
pH value	5 – 7
View	Colorless - Clean - Without Sediment





TECHNICAL SPECIFICATIONS OF WATER TREATMENT DEVICE

MODEL	CAPACITY (L/Day)	CAPACITY (L/h)	OPERATING PRESSURE (psi)	POWER (KW)	DIMENSIONS	AMOUNT
PREMIUM 121	2400	100	150 - 200	0.37	4" x 21"	1
PREMIUM 140	6000	250	150 - 200	0.64	4" x 40"	1
PREMIUM 240	12000	500	150 - 200	0.64	4" x 40"	2
PREMIUM 340	18000	750	150 - 200	1.1	4" x 40"	3
PREMIUM 440	24000	1000	150 - 200	1.5	4" x 40"	4
PREMIUM 640	36000	1500	150 - 200	2.2	4" x 40"	6
PREMIUM 840	48000	2000	150 - 200	2.2	4" x 40"	8



INDEX

3	INTRODUCTION
4-5	CENTRAL STERILE SERVICES DEPARTMENT
6	DIRTY AREA
6-9	WASHING DEVICE, TECHNICAL SPECIFICATIONS
10	CLEAN AREA
11-13	STEAM STERILIZERS
14-15	HYDROGEN PEROXIDE LOW TEMPERATURE STERILIZER
18-19	STERILE AREA
20-23	AUXILIARY EQUIPMENT AND DEVICES USED IN CENTRAL STERILE SERVICES DEPARTMENT
24-25	REVERSE OSMOSIS WATER TREATMENT UNIT
26	INDEX
27	STANDARDS - COMPLIANCES





İvedik OSB, 1453. Cad., No: 3,
06378 Yenimahalle, Ankara
Turkey

Tel: +90 312 395 5795
Fax: +90 312 395 5796

www.eryigit.com.tr
info@eryigit.com.tr



Made in TURKEY

