

SkyBoneCement

SkyCureBond Antibiotic Bone Cement

SkyPureBond Standart Bone Cement



skybiotechnology





skybiotechnology

skybiotechnology

About Us: As SKY, our goal is to distribute the manufactured medical equipment across every area within our region. We strive to provide products and services that align with consumer expectations and meet the required standards, all while maintaining a customer-oriented service approach.

Vision: Sky Biotechnology is dedicated to cooperating with certain medical device manufacturers and distributors transcend boundaries. We lead in market penetration and the certification process, facilitating the dissemination of technological advancements to patients worldwide.

Mission: Sky Biotechnology aspires to be the most trusted and strategic business partner in the medical device industry. As we build our superior brand, we engage in the mission of shaping the future of healthcare services, uniting manufacturers and distributors. We aim to enhance the quality of life for every individual by delivering groundbreaking healthcare products over the next decade.

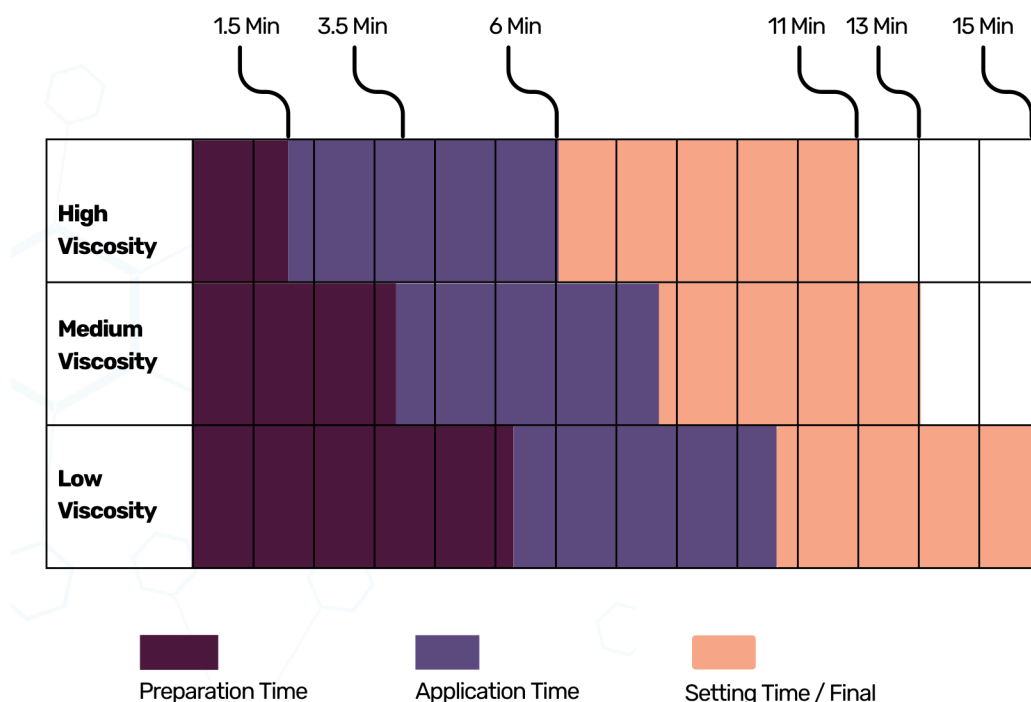
Product Description

Polymethyl methacrylate (PMMA) based Bone Cement is a widely used biometarial due to its ease of use in clinical practise and its long survival rate, espacially with prosthetics. Bone cements have been used very succesfully to anchor artificial joints for more than half a century.

Artifical joints are anchored with bone cement. The Bone Cement fills the free space between the prosthesis and the bone and plays the important role of an elastic zone.

SkyBoneCement is a Radiopaque, PMMA bone cement with different viscosity variants as high, mediumand low viscosity

The Product has two main components: Liquid monomer and powdered polymer. The liquid part consists of methyl methacrylate, dimethyl-para-toluidine and hydroquinone as activators. Powder part consist of PMMA containing dibenzoyl peroxide, barium sulphate radiopacifier and gentamicin as an antibiotic.



Indications

Radiopaque Bone Cement, osteoarthritis, rheumatoid arthritis, traumatic arthritis, avascular necrosis, sickle severe joint breakdown as a result of cell anemia, collagen disease, trauma, or other conditions, and orthopedic musculoskeletal surgery of the prosthesis for revision of past arthroplasty procedures It is indicated for fixation to living bone in procedures. Cement is also a more traditional method of preventing loss of bone material or recalcitrance of fracture. It is also indicated for fixing pathological fractures where it renders procedures ineffective.

Liquid

Monomer	Metilmekattrilat MMA
---------	-------------------------

Activator	N, N Dimetil-para- toludin
-----------	-------------------------------

Stability Provider	Hydroquinone
-----------------------	--------------

Colorant	-
----------	---

Powder

Polymer	PMMA
---------	------

Antibiyotic	Gentamicin Sulphate
-------------	------------------------

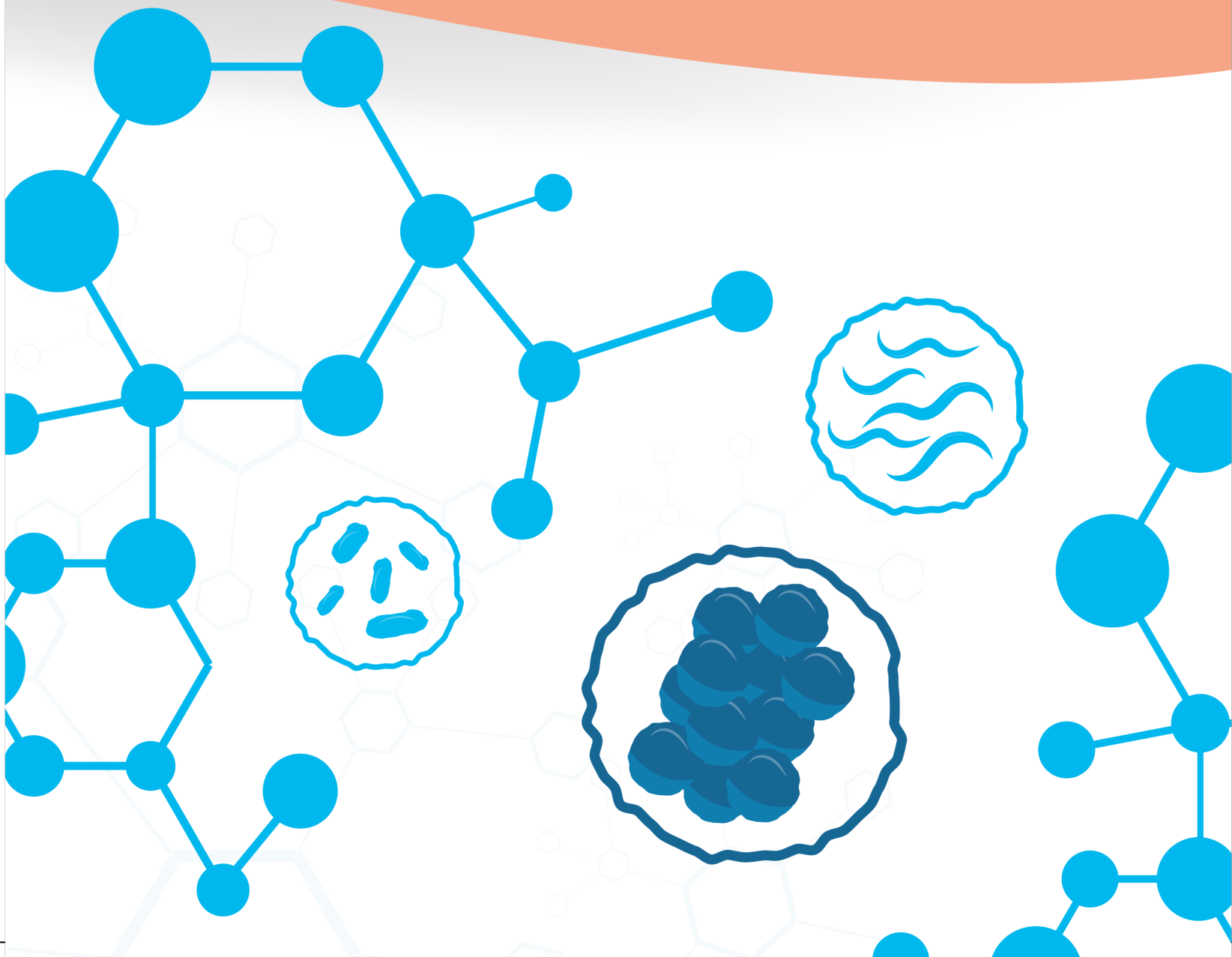
Starter	Benzoil perokside
---------	----------------------

Radio- pacifier	Barium Sulphate
--------------------	--------------------



skybiotechnology

SkyCureBond

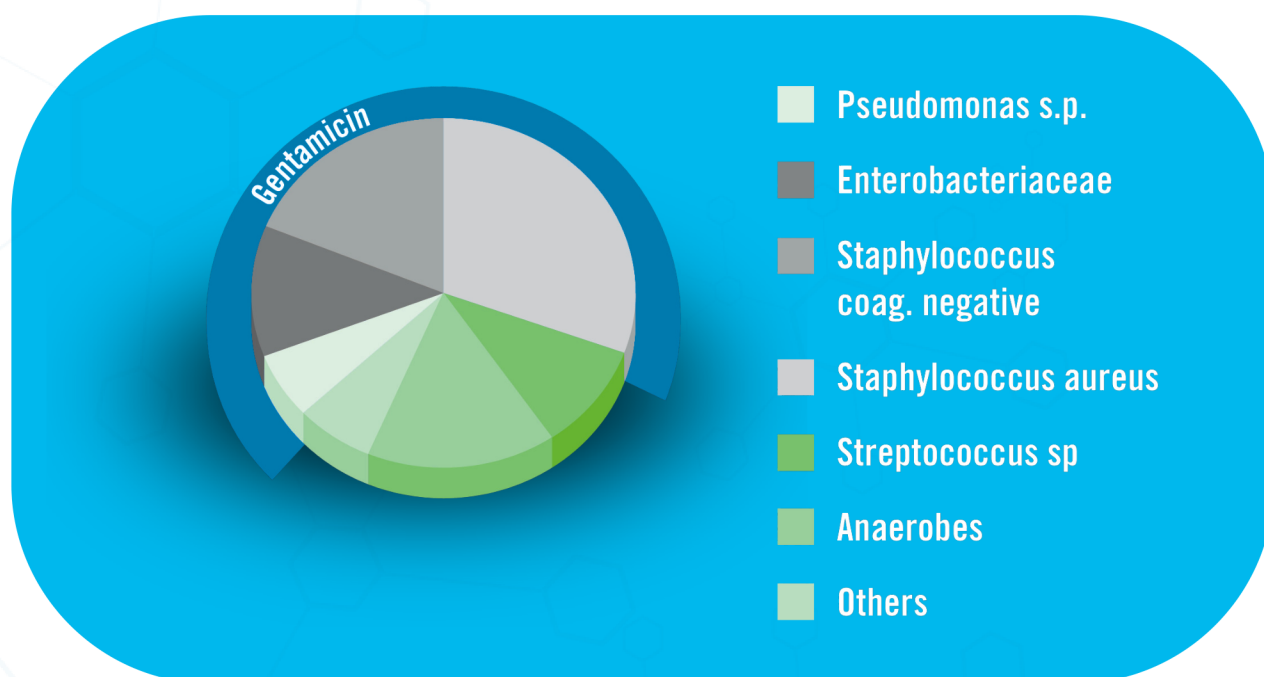


SkyCureBond

Antibiotic Bone Cement

Poly-methyl-methacrylate (PMMA) is the most widely used biomaterial for cranioplasty. The product has two main components: liquid monomer and powdered polymer. The powder contains PMMA with dibenzoyl peroxide, a barium sulfate radiopacifier, and **gentamicin** as an antibiotic.

SkyCureBond Gentamicin Sulphate (Antibiotic)		
Antibiotic High Viscosity	Liquid	Powder
12.5 Gr	Metilmetakrilat(MMA) Dimethyl-p-toluidine Hydroquinone	PMMA Barium Sulphate(Radiopacifier) Benzoil Perokside Gentamicin Sulphate(Antibiotic)
15 Gr		
20 Gr		
25 Gr		
40 Gr		
60 Gr		





skybiotechnology

SkyPureBond



SkyPureBond

High Viscosity

Arthroplasty

Sky Bone Cement; liquid part; Methylmethacrylate, dimethyl-para-toluidine as activator, It consists of hydroquinone. Powder part; P(MMA), containing dibenzoyl peroxide It contains barium sulfate as a radiopacifier and gentamicin as an antibiotic. Powder with this liquid Bone cement is formed by mixing these parts. Radiopaque Bone Cement The packaging contains two sterile components. One of these components has a sweet and slightly astringent odor and One ampoule containing 10 ml or 20 ml of colorless, liquid monomer of the following composition. Hydroquinone may form under certain conditions, such as exposure to light and high temperatures. It was added to prevent premature polymerization. N,N-dimethyl para toluidine to promote cold curing of the final therapeutic compound has been added.

SkyPureBond		
Standart High Viscosity	Liquid	Powder
12.5 Gr	Metilmetakrilat(MMA) Dimethyl-p-toluidine Hydroquinone	PMMA Barium Sulphate(Radiopacifier) Benzoil Perokside
15 Gr		
20 Gr		
25 Gr		
40 Gr		
60 Gr		



SkyPureBond

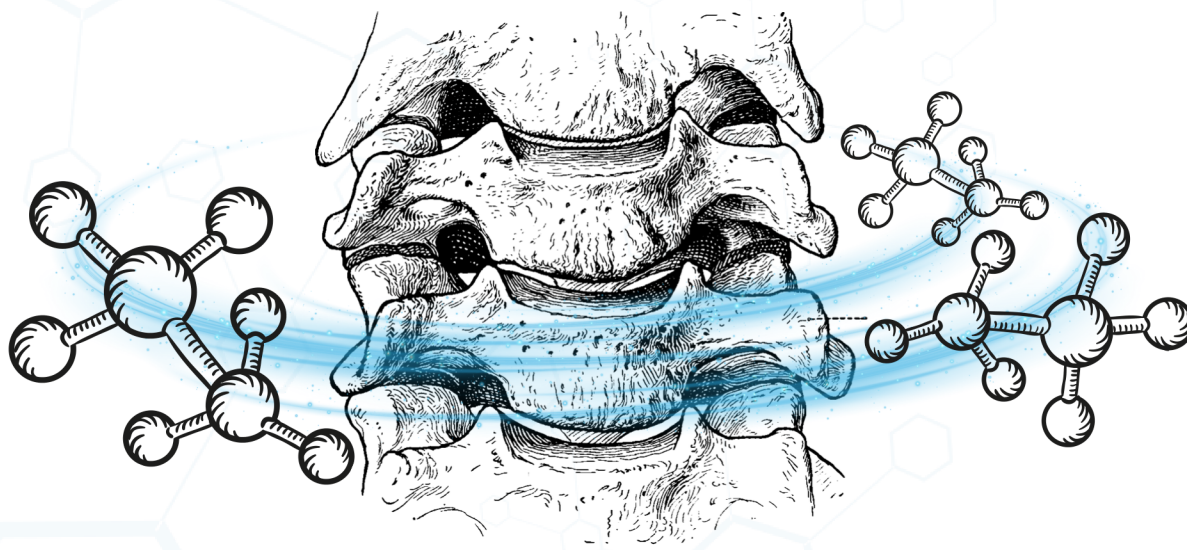
Medium Viscosity

Vertebroplasty

Vertobropasty Bone Cement is indicated for fixation of pathological fractures of the vertebral body (vertebroplasty and kyphoplasty). Sky Bone Cement Vertobropasty Bone Cement is indicated for fixation of pathological fractures of the vertebral body (vertebroplasty and kyphoplasty).

- Easy to use
- Biocompatible
- High radio-opacity
- Appropriate working time

SkyPureBond		
Standart Vertebroplasty Medium Viscosity	Liquid	Powder
12.5 Gr	Metilmetakrilat(MMA) Dimethyl-p-toluidine Hydroquinone	PMMA Barium Sulphate(Radiopacifier) Benzoil Peroxide
15 Gr		
20 Gr		
25 Gr		
40 Gr		
60 Gr		



SkyPureBond

Low Viscosity

Cyranioplasty

Poly-methyl-methacrylate (PMMA) is the most widely used biomaterial for cranioplasty. The product has two main components: liquid monomer and powdered polymer. The powder contains PMMA with dibenzoyl peroxide, a barium sulfate radiopacifier, and gentamicin as an antibiotic.

SkyPureBond		
Standart Cyranioplasty Low Viscosity	Liquid	Powder
12.5 Gr	Metilmetakrilat(MMA) Dimethyl-p-toluidine Hydroquinone	PMMA Barium Sulphate(Radiopacifier) Benzoil Perokside
15 Gr		
20 Gr		
25 Gr		
40 Gr		
60 Gr		





skybiotechnology

SkyBoneCement

SkyCureBond
Antibiotic Bone Cement

SkyPureBond
Standart Bone Cement

Pendik /Istanbul/Türkiye

info@skybiotechnology.com

+90 850 840 75 46



skybiotechnology.com

